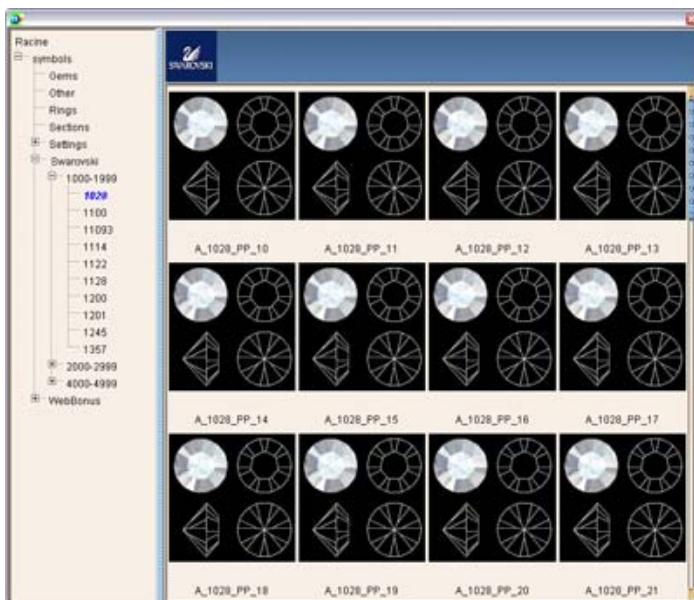




Andrea Lax is a Goldsmith Designer for SWAROVSKI.
The Austrian family company based in Wattens in the Tyrol is world's leading brand for cut crystal.
To visit them: www.business.swarovski.com



Crystal jewelry stones and crystalline semi-finished goods for the fashion, jewelry and lighting industries are as much a part of the **SWAROVSKI's** product range as gift articles, home accessories, and collectibles fashioned from faceted crystal. Swarovski's artistic and design abilities are evident in Daniel Swarovski Paris and Swarovski Jewelry, the company's accessory and jewelry ranges.

SWAROVSKI is a unique partner for **3DESIGN** software. Indeed, the solution integrates the **SWAROVSKI Crystal Fashion components** in its library.

When she first used  **Andrea Lax** appreciated the environment of work:

"The interface looks nice and the general organization is clear."

At the time she started to use 3DESIGN, she was fully sensible of all the qualities like the **Parametric Construction Tree**:

"As a beginner, this tool is really essential to correct mistakes quickly. You don't loose time undoing your design and doing it again. You make your change and the software recalculates every step automatically."

Andrea Lax finds the library very useful as it integrates the most common components to create a ring for example. The fact that you can implement your own elements like curves, stones, shapes... is a real asset for the software according to her.

"We are recent 3DESIGN users but really believe this is THE product dedicated to jewels and accessories!"
